

— Project Announcement —

Construction of Browns Canyon National Monument road widening has begun on County Road 300 at Mile Marker 2.2 which traverses Sugarloaf Mountain adjacent to the Arkansas River near Ruby Mountain Campground.

FHWA and contracting partner, Cooley & Sons Excavating, Inc. have begun construction to widen a section of roadway on County Road 300 near mile marker 2.2 that traverses the foot of Sugarloaf Mountain (locally known as “Narrows”) adjacent to the Arkansas River. Additional work includes: import and placement of aggregate surfacing, and installation of signs and delineator posts. Project completion is scheduled for December 2024.

Travel Impacts

Delays

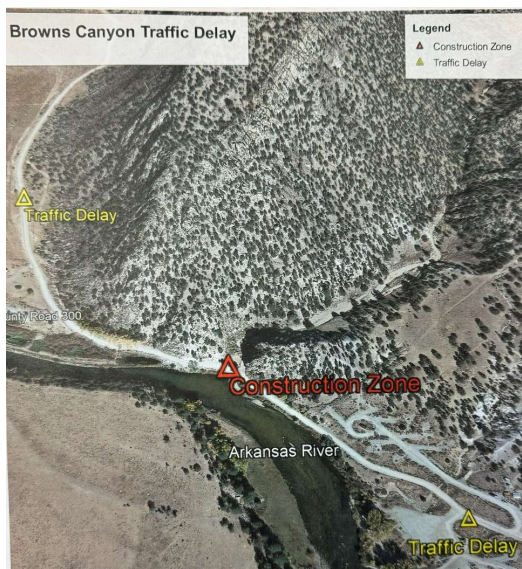
Motorist can expect weekday full stop delays, up to 30 minutes, when traveling in and out of Browns Canyon entrance on County Road 300 effective September 16, 2024, and continuing until full closure of County Rd 300 on September 23, 2024. Delays are expected weekdays from 8:00 a.m. – 6:00 p.m. and motorist should allow for extra travel time.

Full Road Closure

Motorist can expect weekday full road closure of County Road 300 near Mile Marker 2.2 from 8:00 a.m. – 12:00 p.m. and 1:00 p.m. - 6:00 p.m. beginning September 23, 2024 and continuing through December 11, 2024. County Road 300 will be open to traffic at all other times. Dates of scheduled closures are subject to change.

River Closures

Public water users can expect weekday closure of the Arkansas River from 8:00 a.m. – 6:00 p.m. for a distance of 1500’ upriver and 1500’ downriver from Browns Canyon construction site during blasting activities beginning October 1, 2024 and continuing through October 29, 2024. Dates and times of scheduled closures are subject to change.



Remember:

- Travel delays/closures
- Reduced speed in work zones
- Stay Alert!
- Watch for workers
- Be alert at night while driving in work zones
- Be patient!